

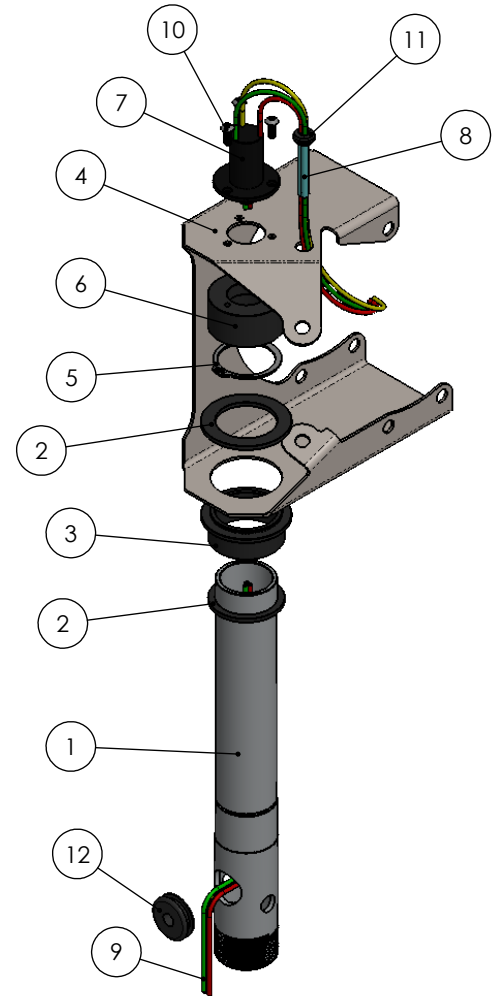
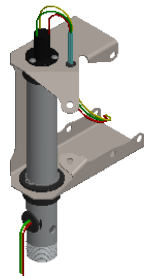
2

1

ITEM NO.	PART NUMBER	DESCRIPTION	QTY.
1	126.1801	Mast	1
2	126.1103	Thrust Bearing	2
3	127.1203	Bushing	1
4	127.1101	Frame	1
5	91590A140	External Retaining Ring	1
6	127.1204	Pivot Cap	1
7	MW1330	Slip Ring	1
8	126.1109	PMG to Slip Ring Wire	1
9	126.1110	Slip Ring Wire	1
10	92949A242	18-8 Stainless Steel Button Head Hex Drive Screw	3
11	9307K181	Buna-N Rubber Grommets	1
12	9307K121	Grommet	1

B

B



ASSEMBLY INSTRUCTIONS

1. SECURE ITEM 1, DO NOT DAMAGE THREADS
2. SLIP ON SMALL ITEM 2
3. SLIP ON ITEM 3
4. SLIP ON ITEM 4 FOLLOWED BY ANOTHER ITEM 2, 5 AND 6
5. SECURE ITEM 6 WITH ITEM 10 SCREWS THROUGH ITEM 7

ITEM 7 WILL BE WIRED AFTER THE GENERATOR IS INSTALLED

HARDWARE: McMASTER-CARR

A

A

PROPRIETARY AND CONFIDENTIAL

THE INFORMATION CONTAINED IN THIS DRAWING IS THE SOLE PROPERTY OF SOLIEX, INC. , ANY REPRODUCTION IN PART OR AS A WHOLE WITHOUT THE WRITTEN PERMISSION OF SOLIEX, INC. IS PROHIBITED.

		DIMENSIONS ARE IN INCHES TOLERANCES: FRACTIONAL ± ANGULAR: MACH ± BEND ± TWO PLACE DECIMAL ± THREE PLACE DECIMAL ±		NAME	DATE
		MATERIAL		DRAWN	DG 6/27/2022
		FINISH		CHECKED	
NEXT ASSY	USED ON			ENG APPR.	
APPLICATION		DO NOT SCALE DRAWING		MFG APPR.	
				Q.A.	
				COMMENTS:	

SOLIEX, INC.

Turbine Tail

SIZE	DWG. NO.	REV.
A	126.1000	
SCALE:1:10	WEIGHT: 26.22	SHEET 1 OF 3

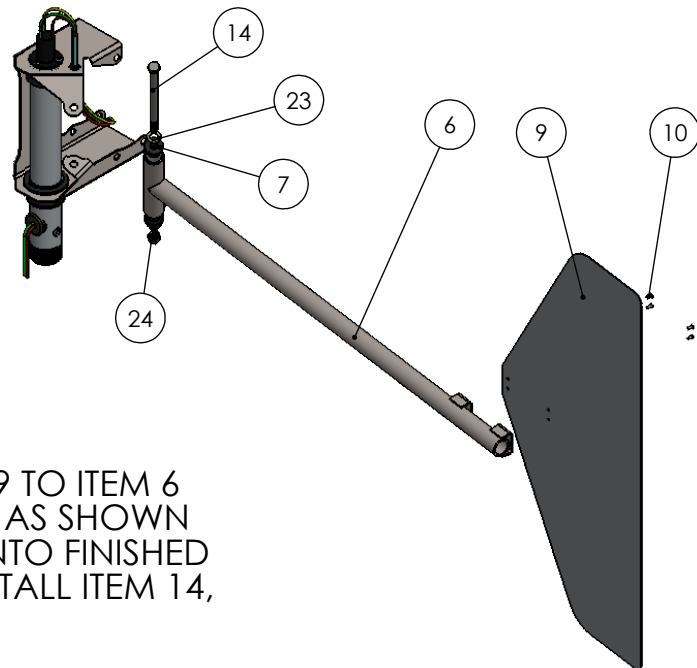
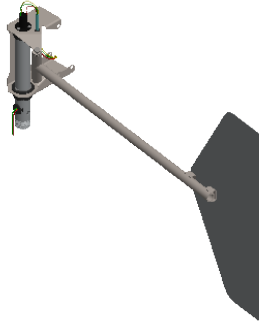
2

1

ITEM NO.	PART NUMBER	DESCRIPTION	-02/QTY.
6	127.1301	Tail Boom	1
7	127.1302	Bushing	2
9	127.1401	Tail	1
10	CCP-43	Cherry Rivet	4
14	92198A650	18-8 Stainless Steel Hex Head Screw	1
23	90107A127	3/8" SS Flat Washer	2
24	90715A145	3/8"-16 SS Lock Nut	1

B

B



ASSEMBLY INSTRUCTIONS

1. RIVIT USING ITEM 10, ITEM 9 TO ITEM 6
2. INSTALL ITEM 7 INTO ITEM 6 AS SHOWN
3. POSITION TAIL ASSEMBLY INTO FINISHED FRAME ASSEMBLY AND INSTALL ITEM 14, 25 AND 26

HARDWARE: McMASTER-CARR

A

A

PROPRIETARY AND CONFIDENTIAL
 THE INFORMATION CONTAINED IN THIS DRAWING IS THE SOLE PROPERTY OF <COMPANY NAME>. ANY REPRODUCTION IN PART OR AS A WHOLE WITHOUT THE WRITTEN PERMISSION OF <COMPANY NAME> IS PROHIBITED.

		DIMENSIONS ARE IN INCHES TOLERANCES: FRACTIONAL ± ANGULAR: MACH ± BEND ± TWO PLACE DECIMAL ± THREE PLACE DECIMAL ±		NAME	DATE
		MATERIAL		DRAWN	DG 6/27/2022
		FINISH		CHECKED	
NEXT ASSY	USED ON			ENG APPR.	
APPLICATION		DO NOT SCALE DRAWING		MFG APPR.	
				Q.A.	
				COMMENTS:	

SOLIEX, INC.

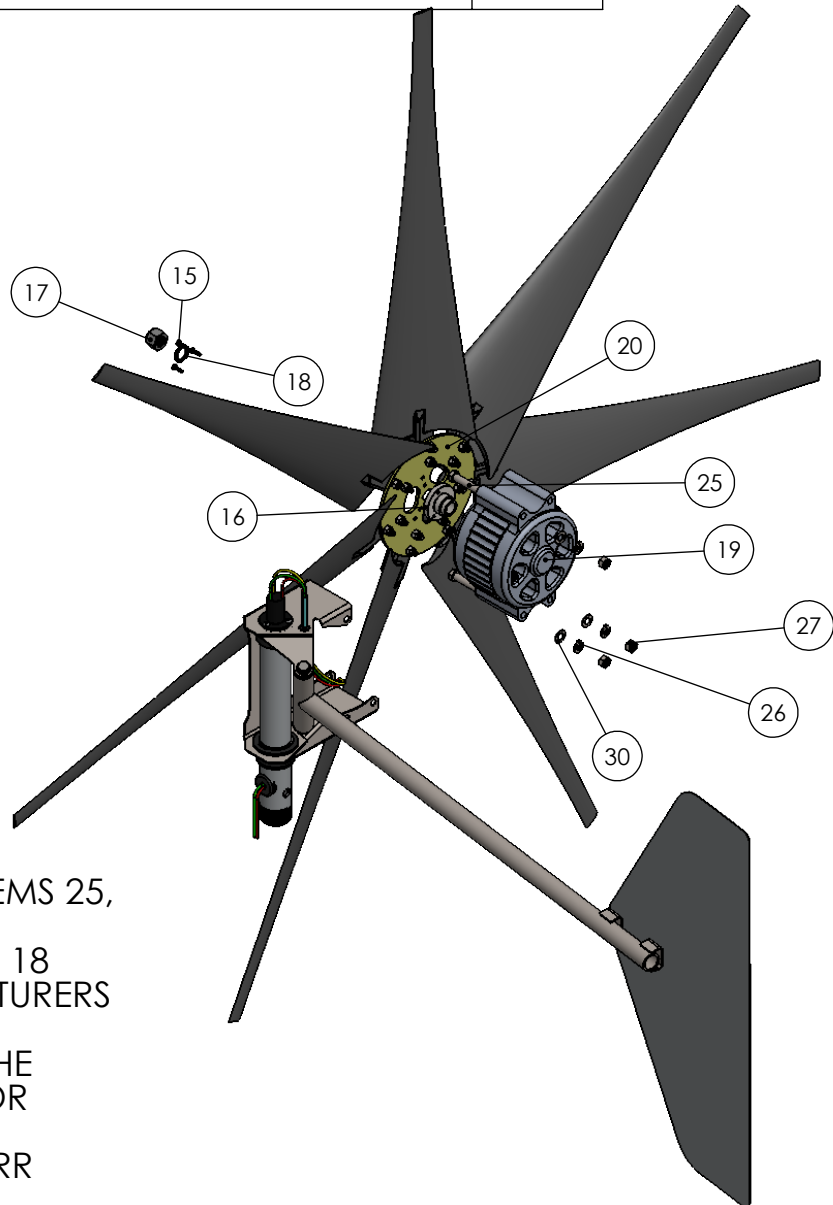
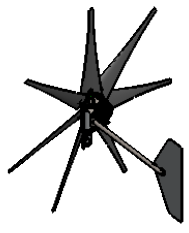
Turbine Tail

SIZE	DWG. NO.	REV.
A	126.1000	
SCALE: 1:10	WEIGHT: 26.22	SHEET 2 OF 3

ITEM NO.	PART NUMBER	DESCRIPTION	QTY.
15	92005A223	M4 x 14 PAN HEAD PHILLIPS SCREW	3
16	Gen4_huba	Adapter	1
17	91831A145	5/8"- NYLON LOCK NUT	1
18	91812A235	Wedge Lock Washer	1
19	FREEDOM_PMG_12V	Freedom PMG 12V	1
20	Gen4_7	ROTOR ASSEMBLY	1
25	92186A640	TYPE 316 STAINLESS STEEL HEX HEAD CAP SCREW 3/8"x4-1/4"	3
26	92147A031	TYPE 316 STAINLESS STEEL SPLIT LOCK WASHER 3/8"	3
27	94819A049	ASTM F594 TYPE 316 STAINLESS STEEL HEX NUT 3/8"	3
30	90107A127	3/8" SS Flat Washer	3

B

B



ASSEMBLY INSTRUCTIONS

1. ATTACH ITEM 19 WITH ITEMS 25, 26, 27 AND 30
2. ATTACH ITEMS 15, 16, 17, 18 AND 20 PER MANUFACTURERS INSTRUCTIONS
3. COMPLETE WIRING OF THE SLIP RING TO GENERATOR

HARDWARE: McMASTER-CARR

A

A

PROPRIETARY AND CONFIDENTIAL
 THE INFORMATION CONTAINED IN THIS DRAWING IS THE SOLE PROPERTY OF SOLIEX, INC. , ANY REPRODUCTION IN PART OR AS A WHOLE WITHOUT THE WRITTEN PERMISSION OF SOLIEX, INC. IS PROHIBITED.

		DIMENSIONS ARE IN INCHES TOLERANCES: FRACTIONAL ± ANGULAR: MACH ± BEND ± TWO PLACE DECIMAL ± THREE PLACE DECIMAL ±		NAME	DATE
		MATERIAL		DRAWN	DG 6/27/2022
		FINISH		CHECKED	
NEXT ASSY	USED ON			ENG APPR.	
APPLICATION		DO NOT SCALE DRAWING		MFG APPR.	
				Q.A.	
				COMMENTS:	

SOLIEX, INC.

Turbine Tail

SIZE	DWG. NO.	REV.
A	126.1000	
SCALE: 1:50	WEIGHT: 26.22	SHEET 3 OF 3